

The logo features the acronym 'OCIMF' in a white, serif font, centered on a dark blue background. The text is framed by a series of white horizontal lines that are wider at the ends and taper towards the center, creating a stylized, rounded rectangular shape. There are five lines above the text and five lines below it.

OCIMF

A Voice for Safety



Marine Terminal Information System

Europe & Africa Regional Marine Forum

Rome, 19th June 2018

Captain S. Bianca,



Introduction to the Marine Terminal Information System (MTIS)



Goals of MTIS

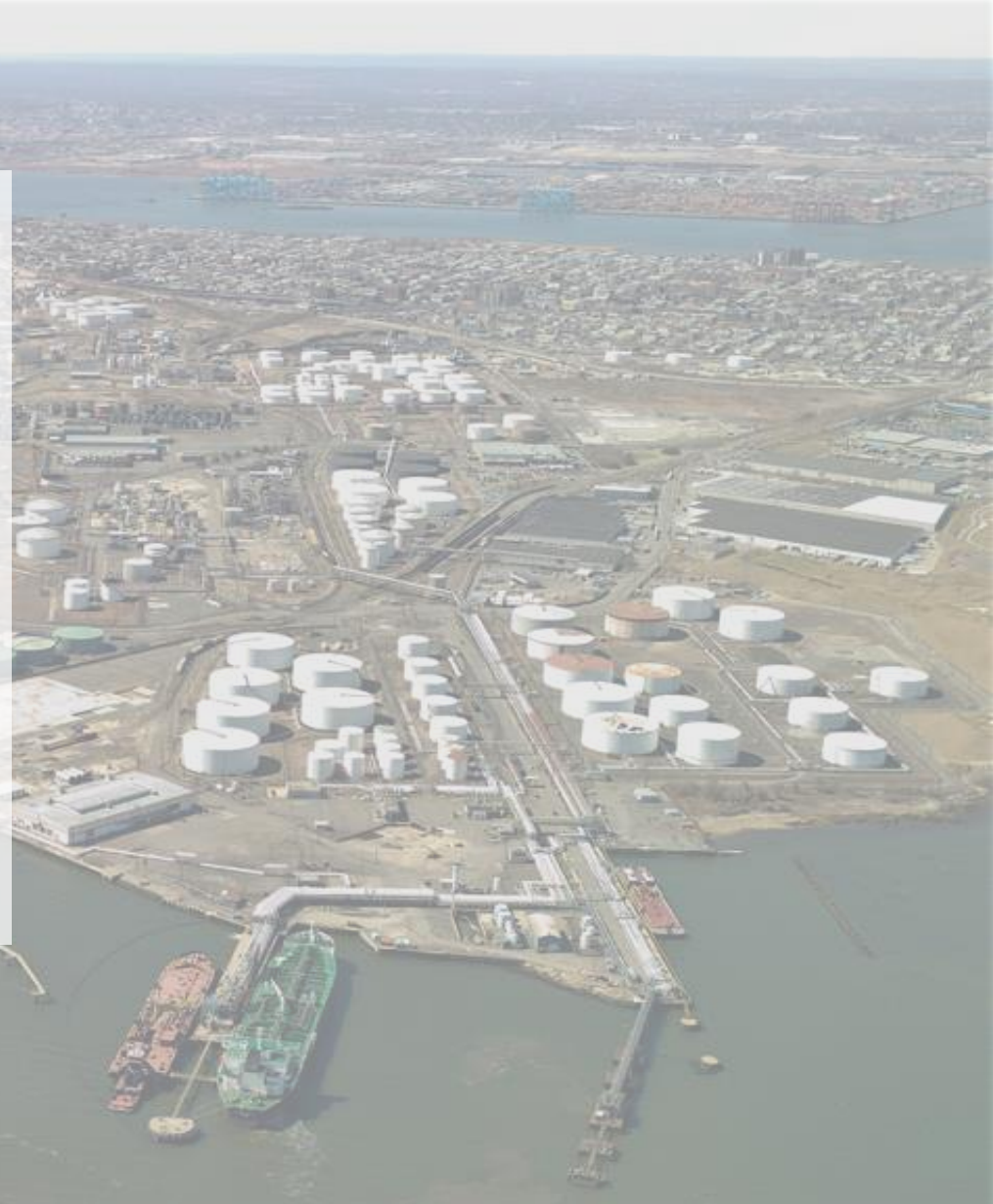


Improving terminal safety, reliability, efficiency and environmental protection

MTIS aims to help marine terminals continuously improve their operational standards of safety, reliability, efficiency and environmental protection.

To do this, MTIS brings together all relevant information required by the stakeholders regarding a terminal's physical properties and management systems. Holding information in one place, dispensing with the need to consult multiple sources.

MTIS consists of a suite of three programmes covering the terminal's physical, management and operations systems.



MTIS Suite of Programmes



Marine Terminal Information System (MTIS)



🔍 MTPQ

Marine Terminal Particulars
Questionnaire

Comprehensive physical particulars of each terminal. Used alongside SIRE vessel data to assess compatibility of ships and terminals, ensuring safer operation and environmental protection.



☰ MTMSA

Marine Terminal Management
and Self Assessment

Best practice guide to help terminal operators assess and continuously improve their safety, reliability, efficiency and environmental performance.



☑ MTOCT

Marine Terminal Operator
Competency and Training

Guide to help terminal management assess competencies, identify gaps and develop appropriate training of their terminal operators.

Benefits of MTIS



Benefits to Terminal Operators



Through the exchange of technical data and practical experience terminal operators secure a number of benefits from MTIS, including:



Reduced Administration

Simpler, faster sharing of terminal information through a single, central database



Full Security

Terminal operators retain full control, ownership and management of their data



Reduced Incidents

Improved safety, reliability, efficiency and environmental performance



Capability Promotion

Enhanced demonstration of terminal capabilities through the MTPQ



Improved Efficiency

More accurate, faster matching of terminals and ships



Improved Training and Morale

Better trained and motivated staff through the use of MTOCT



Reduction in Audit Activity

Reduction in time and number of Audits. Pre-completed document for review and select areas for verification



Continuous Improvement

Continuous improvement of safety management systems through best practice self assessment using MTMSA

Accessing MTIS



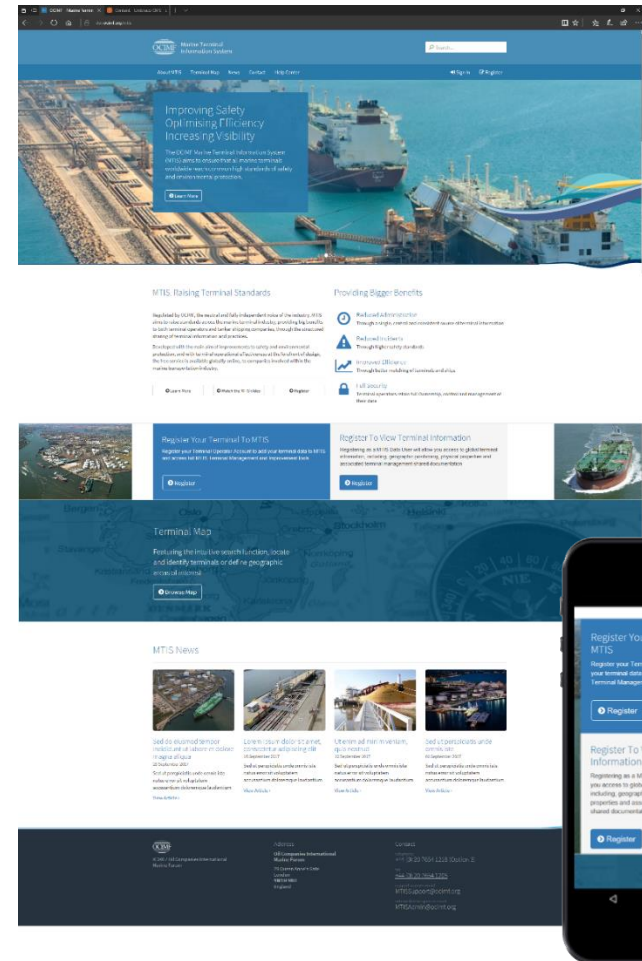
Accessing MTIS

Through the OCIMF website, click 'Programmes' - 'MTIS'
or visit: www.ocimf-mtis.org/ to go directly to the MTIS microsite.

The MTIS microsite landing page provides clear direction to:

- Full background information about MTIS and the benefits offered
- Help Center providing 24/7 support for all MTIS queries and microsite support
- An interactive terminal map displaying global terminal positions
- MTIS contact information
- Links to Register and Login to MTIS

Multi-language brochures are also offered, providing a high-level overview of the system.



Types of MTIS User

Providing big benefits to both terminal operators and tanker shipping companies, through the structured sharing of terminal information and practices, MTIS aims to raise standards across the marine terminal industry

Terminal Operator



Terminal Operator users can add their terminal data to MTIS and access full MTIS Terminal Management and Improvement tools

Data User



Data Users can access global terminal information, including; geographic positioning and terminal shared documentation (MTPQ, etc.)

OCIMF Member



OCIMF Members will have additional MTMSA and Statistical Reports functionality (permission depending)

Registering to MTIS

Registering to MTIS can be initiated through the MTIS Microsite for Terminal Operator and Data User access. Each user type undergoes a registration journey unique to, and supporting, their account type needs.

OCIMF members are able to have an MTIS account automatically created upon request.

Terminal Operator Registration

Registering your Terminal Operator Account

Account Setup

Joining an Established MTIS Terminal Account

Your Details

First Name

Last Name

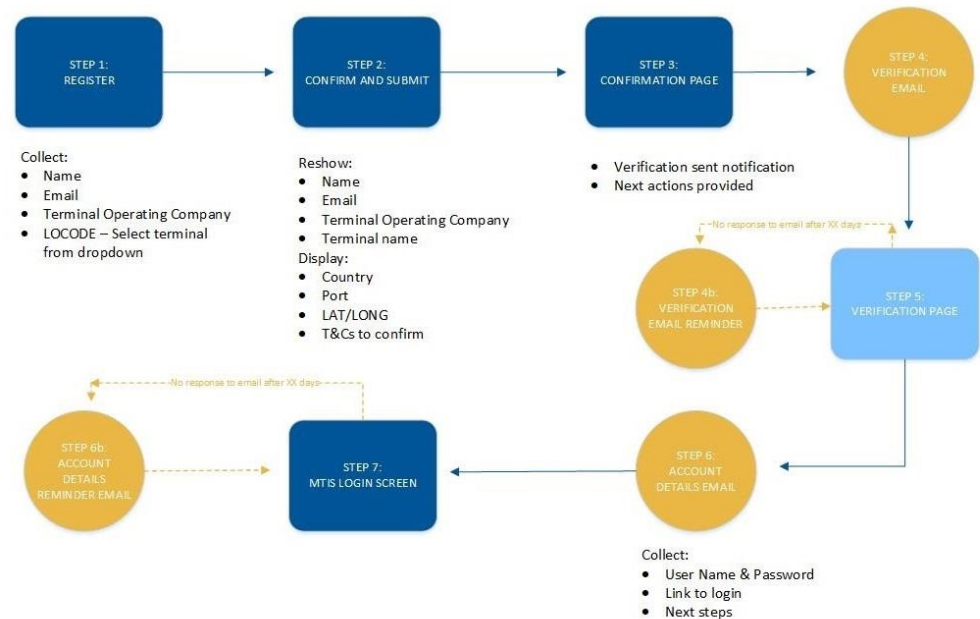
Email

Operating Company

ADD Terminal

LOCODE

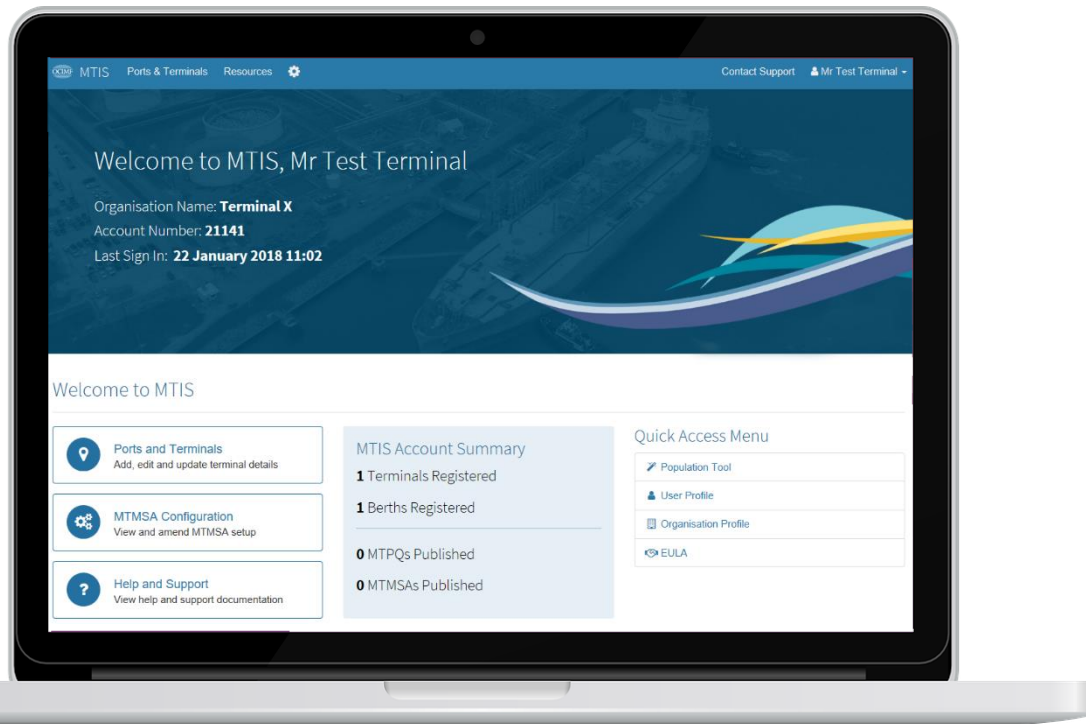
Search



*Terminal Operator registration journey

! Regardless of account type, a user must first sign OCIMF's End User Licence Agreement (EULA)

MTIS Home Screen



*Terminal Operator view

Once Registered and logged into their MTIS account, the user can:

Terminal Operator

- View and add terminals
- View/Add/Amend terminal MTPQ and MTMSA data
- Amend settings and users (Account Supervisor only)

Data User

- Request and view terminal MTPQ data

OCIMF Member

- In addition to standard user functionality, OCIMF members will have access to additional MTMSA (permissions granted) and Statistical Reports functionality

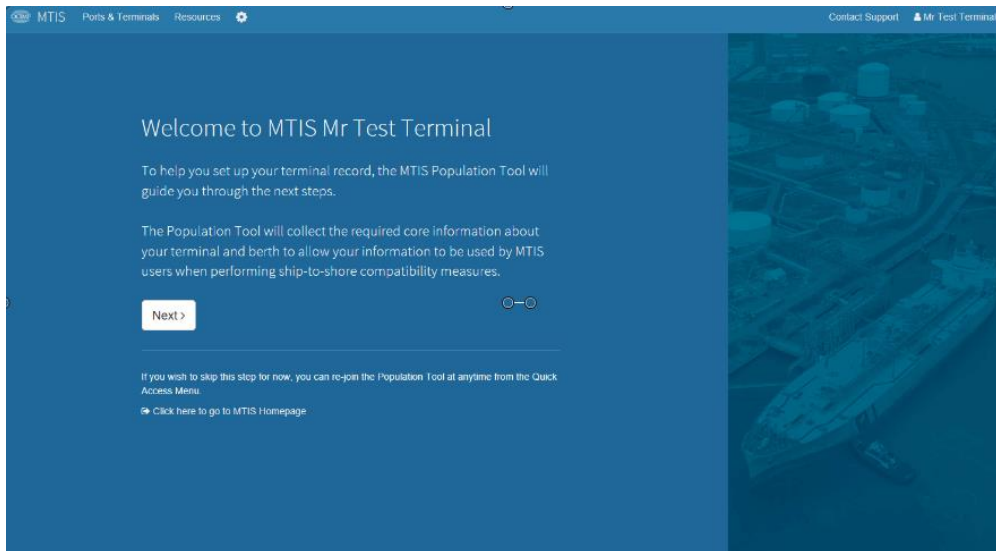
Entering MTPQ Data



Entering MTPQ Data



First time Terminal Operator users will enter the **Population Tool**, which will support in populating berth details into their terminal MTPQ:



- The information collected by the Population Tool, through a set of Key Questions, will collate the basic physical properties data required by a terminal visitor to safety and successfully call at a berth
- The information added into the tool will be added to the terminal's MTPQ document
- The user will be taken to the Terminal page once the Population Tool stage is completed
- The Terminal Operator can edit and add further details to their MTPQ through the Terminal page
- The MTPQ can be completed at the Operators time and digression

Clicking 'Publish' will allow Data Users to view a terminals MTPQ information (Privacy setting dependent)

Key Questions

Population Tool Key Questions:

The screenshot shows the 'MTIS Population Tool' interface for 'BP Refinery Rotterdam'. The main section is 'Step 2: Berth Details'. It contains several input fields and dropdown menus for recording ship details. The fields are organized into sections: 'Berth Details' (Berth Name or Number, Berth Type), 'Length Overall (LOA)' (Minimum Under Keel Clearance (UKC) in Berth Approaches (Value), Minimum Under Keel Clearance (UKC) in Berth Approaches (Percentage), Length Overall), 'Alongside Displacement' (Alongside Displacement), 'Summer Deadweight' (Summer Deadweight), 'Beam' (Beam), 'Mainfold' (Bow to Centre of Mainfold (BCM), Mainfold Height Above Water, Stern to Mid-Point Manifold (SCM), Mainfold to Shipside Rail Distance), and 'PBL' (PBL - Total, PBL - Forward, PBL - Aft). Each field has a 'Max' and 'Min' value, and some have dropdown menus for units or options.

Data entered into the Population Tool will be automatically added to the terminal's MTPQ document. This information will make up c16% of the complete MTPQ.

The Terminal Operator will have the opportunity to amend and complete further sections of their MTPQ through the Terminal page.

A template of the complete MTPQ, highlighting all questions and the information collected within, can be accessed from the Support page of your MTIS account.

LOCODE (Captured at Registration level)

COUNTRY (Captured at Registration level)

Terminal NAME (Captured at Registration level)

BERTH NAME

TYPE

Minimum Under Keel Clearance (UKC) in Berth Approaches (Value) (m)

Minimum Under Keel Clearance (UKC) in Berth Approaches (Percentage) (%)

Length Overall (LOA) (m)

Alongside Displacement (t)

Summer Deadweight (t)

Beam (m)

Bow to Mid-Point Manifold (BCM) (m)

Mainfold Height Above Water (m)

Stern to Mid-point Manifold (SCM) (m)

Mainfold to Shipside Rail Distance (m)

PBL - Total (m)

PBL – Forward (m)

PBL - Aft (m)

MTIS Reports



Reports

The Terminal page will provide a snap shot overview of a terminal's MTPQ and MTMSA completion status:

The screenshot displays the MTIS interface for the Jordan Maritime Commission. The top navigation bar includes 'MTIS', 'Ports & Terminals', 'Reporting', and 'Resources'. The user is logged in as 'Mr Rob Drysdale'. The main content area is titled 'Jordan' and 'Jordan Maritime Commission'. It features two progress bars: 'MTPQ' at 98% (last updated 21 Sep 2015 13:04) and 'MTMSA' at 100%. Below these are toggle switches for 'MTIS Recipient Access' and 'Terminal Operator Access', both set to 'ON'. A table lists 'Terminal Berths' with one entry: 'FSRU' (Double Banked alongside FSRU) at 96% completion. A map shows the 'Terminal Location' at 'Durra Border Crossing'. The 'Terminal Attachments' section is empty.

Berth Name	Berth Type	Percentage complete
FSRU	Double Banked alongside FSRU	96%

Depending on account type, a user can:

- **Terminal Operators** can edit the data for their terminal
- **Data Users** can view the data by clicking on 'View' for either the MTPQ or MTMSA

Note that Terminal Operator is in full control of who sees the terminal information. When requesting to view by a Data User, an email is generated to the terminal operator requesting access (unless already 'available to all').

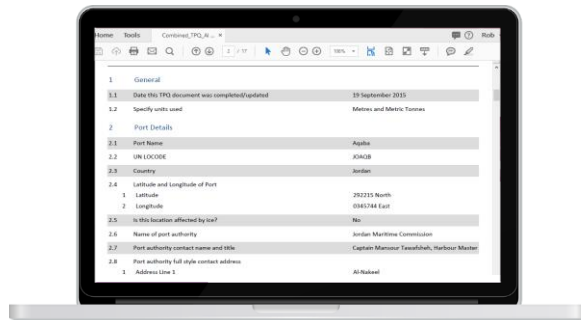
Viewing a Report



MTPQ Document

Summary of MTPQ Sections:

- Port Details
- Terminal Details
- TPQ Accountability
- Port Facility Security Officer Details
- Operational Integrity Details
- Berth General
- Berth Approaches
- Water Depth Alongside
- Limiting Vessel Dimensions
- Mooring and Berthing Information
- Berth Equipment and Facilities
- Berth Operations
- Available Services
- Berth Low Temperature Impact



MTMSA Document

Example of MTMSA Elements:

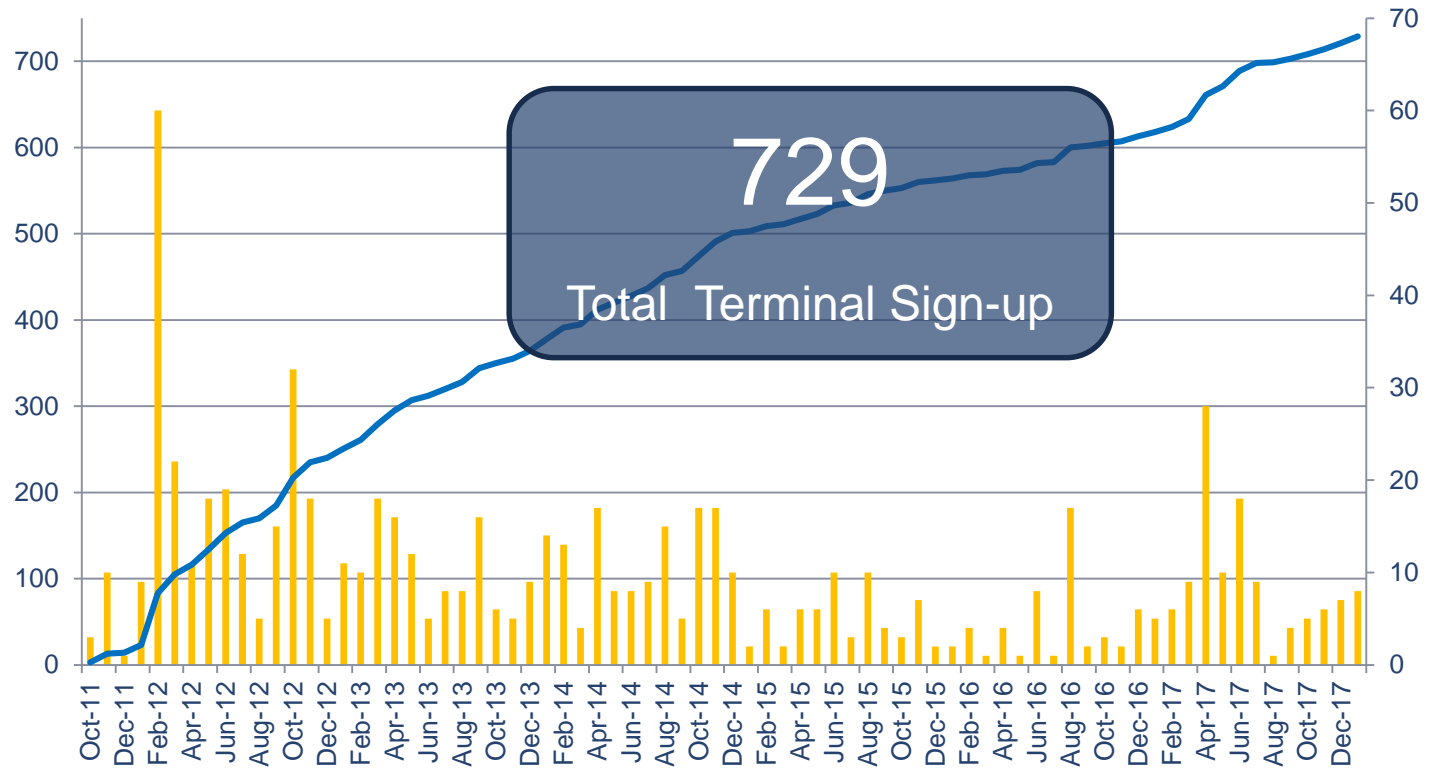
- Element 1. Management, Leadership and Accountability
- Element 1A. Management, Leadership and Accountability - Policies and Procedures
- Element 2. Management of Terminal Personnel
- Element 2A. Management of Contractors
- Element 3. Port and Harbour Operations
- Element 4. Terminal Layout – General
- Element 4A. Terminal Layout - Transfer Equipment
- Element 5. Ship/Shore Interface
- Element 6. Transfer Operations
- Element 7. Maintenance Management
- Element 8. Management of Change
- Element 9. Incident Investigation and Analysis
- Element 10. Management of Safety and Occupational Health
- Element 10A. Security Management including Visitor Controls
- Element 11. Environmental Protection
- Element 12. Emergency Preparedness
- Element 13. Management System Review
- Element 14. Operations at Buoy Moorings (Supplementary)
- Element 15. Terminals Impacted by Ice or Severe Sub-Zero Air Temperatures (Supplementary)

MTIS Statistics



Marine Terminal Statistics

Terminal signups per month



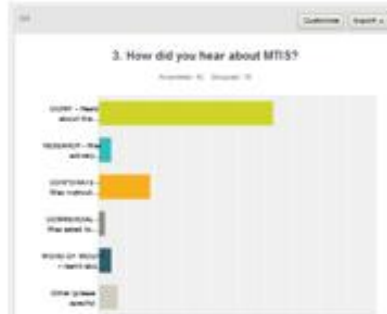
Ongoing Development



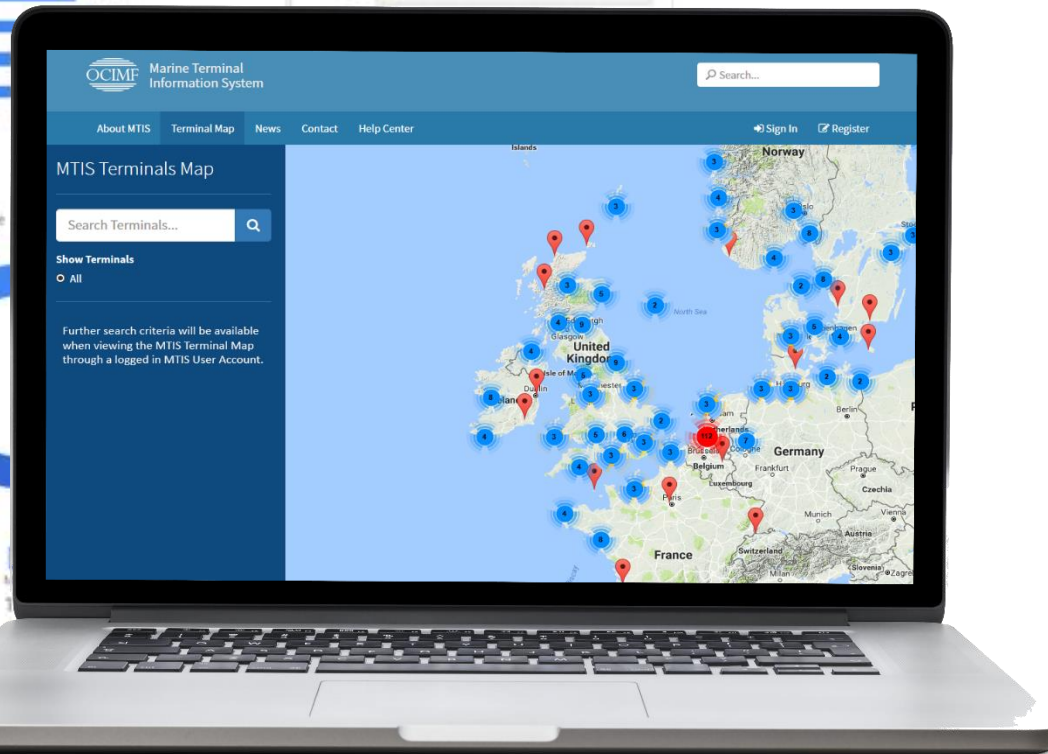
User Statistics and Feedback



Sessions by country



Sessions by device



MTIS has recently been subject to a full scope review and development project.

Based on user feedback and activity, a number of improvements and changes have been made, with further changes currently in process.

The changes aim to further strengthen the MTIS tool as a means to ensure ALL marine terminals and terminal users worldwide reach a common high standard of safety and environmental protection.

Ongoing Development



Further improvements are in scope to be carried out in the next phase of the project, including:

- Further development of the MTPQ Population Tool / Key Questions
- Development of the Data User Registration tool
- Auto-population of port details
- Ability to amend a terminal's positioning on the Terminal Map

This list is not inclusive and OCIMF welcome any suggestions for further improvements.



OCIMF's Role in MTIS

OCIMF's trusted, neutral and fully independent status within the global industry is at the heart of its ability to capture and share information and best practice aimed at continuously improving terminal performance.





A Voice for Safety

OCIMF.org

Oil Companies International Marine Forum
29 Queen Anne's Gate, London, SW1H 9BU

Tel: +44 (0) 20 7654 1200
Fax: +44 (0) 20 7654 1205